



**Ellington Court, High Street, London, N14**  
**Chain Free £329,995 Leasehold**

**Anthony Webb**  
ESTATE AGENTS

# Ellington Court, High Street, London, N14

Spacious and CHAIN FREE two double bedroom ground floor apartment REQUIRING MODERNISATION offering an impressive 840sq ft of living space within easy walking distance of Southgate's shops, restaurants, bus routes and underground station (Piccadilly Line). The flat should be within the ever popular Walkers primary school catchment area (please make own enquiries to confirm).

The property consists of a spacious double reception space with door to terrace and communal gardens, separate kitchen, bathroom, two good size double bedrooms, double glazing and gas central heating. There is also an option to rent a parking space for £40pcm.

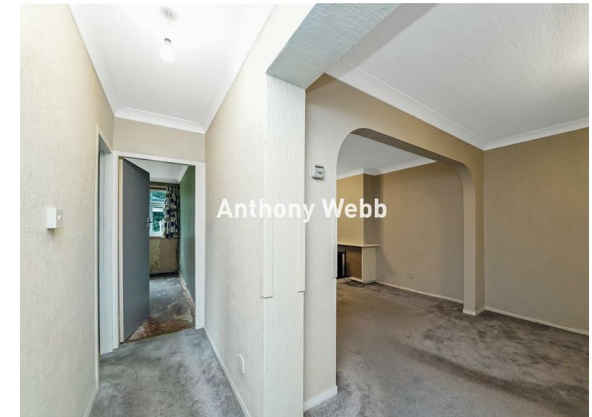
The property is offered with a remaining lease of 119 years.

No service charges at present-Speak to agent

Ground rent-£150 p.a

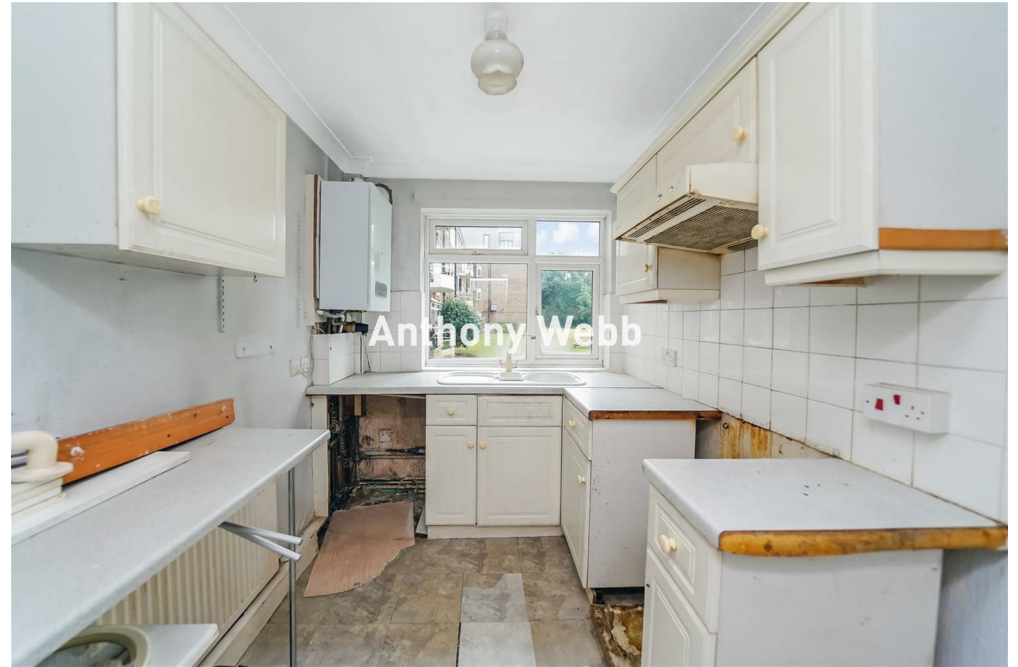
Council Tax band C

- Two double bedrooms
- Ground floor apartment
- Spacious living space
- Separate kitchen
- Secure communal entrance
- Double glazing/gas central heating
- Option to rent a parking space
- Direct access to communal gardens





Anthony Webb



Anthony Webb



Anthony Webb



Anthony Webb

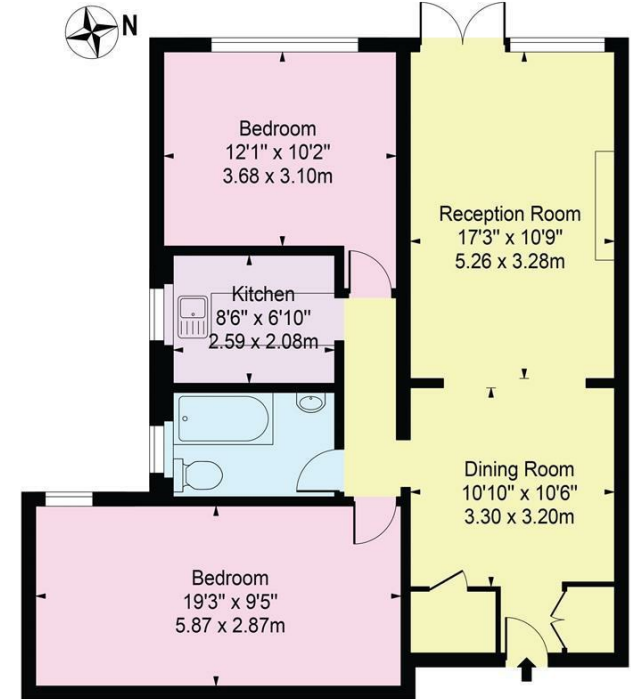
# Ellington Court, High Street London N14 6LB

Tenure: Leasehold  
Gross Internal Area: 840.00 sq ft



Energy Efficiency Rating		Current	Potential
Very energy efficient - lower running costs			
(92 plus) A			78
(81-91) B			
(69-80) C			
(55-68) D		62	
(39-54) E			
(21-38) F			
(1-20) G			
Not energy efficient - higher running costs			
England & Wales EU Directive 2002/91/EC			
Environmental Impact (CO <sub>2</sub> ) Rating		Current	Potential
Very environmentally friendly - lower CO <sub>2</sub> emissions			
(92 plus) A			
(81-91) B			
(69-80) C			
(55-68) D			
(39-54) E			
(21-38) F			
(1-20) G			
Not environmentally friendly - higher CO <sub>2</sub> emissions			
England & Wales EU Directive 2002/91/EC			

## Ellington Court, N14 6LB Approx. Gross Internal Area 840 Sq Ft - 78.04 Sq M



Ground Floor  
For Illustration Purposes Only - Not To Scale

This floor plan should be used as a general outline for guidance only and does not constitute in whole or in part an offer or contract. Any intending purchaser or lessee should satisfy themselves by inspection, searches, enquiries and full survey as to the correctness of each statement. Any areas, measurements or distances quoted are approximate and should not be used to value a property or be the basis of any sale or let.

Property particulars as supplied by Anthony Webb Estate Agents are set out as a general outline in accordance with the Property Misdescriptions Act (1991) only for the guidance of intending purchasers of lessees, and do not constitute any part of an offer or contract. Details are given without any responsibility, and any intending purchasers, lessees or third parties should not rely on them as inspection or otherwise as to the correctness of each of them. We have not carried out a structural survey and the services, appliances and specific fittings have not been tested. All photographs, measurements, floor plans and distances referred to are given as a guide only and should not be relied upon for the purchase of carpets or any other fixtures statements or representations of fact, but must satisfy themselves by or of fittings, gardens, roof terraces, balconies and communal gardens as well as tenure and lease details cannot have their accuracy guaranteed for intending purchasers. Lease details, service ground rent (where applicable) are given as a guide only and should be checked and confirmed by your solicitor prior to exchange of contracts. no person in the employment of Anthony Webb has any authority to make any representation or warranty whatever in relation to this property.

348 Green Lanes, Palmers Green, London N13 5TJ  
020 8882 7888  
palmersgreen@anthonywebb.co.uk  
anthonywebb.co.uk

